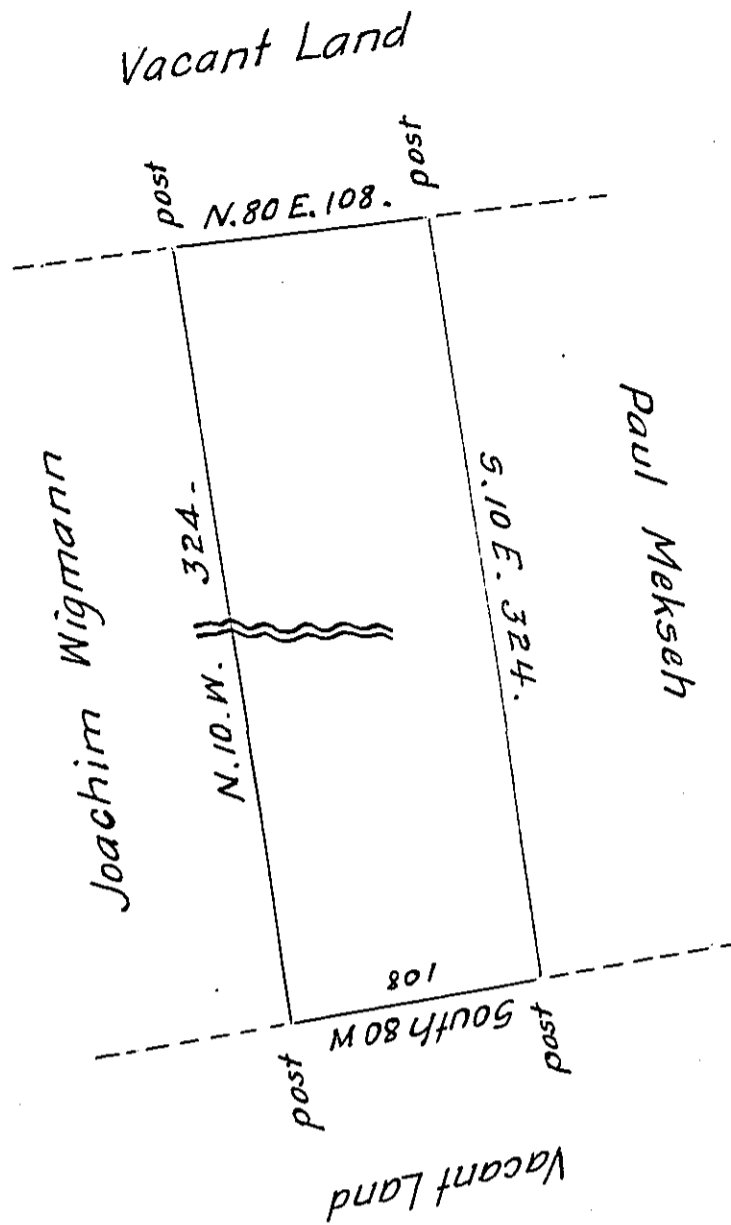


Hazle -
Luzerne.



By Virtue of a Warrant dated the 5th March 1789. Surveyed
 the 20th May. 1789. to David Peters the above described Tract of Land
 situate on the Head of Cranberry Creek a Branch of Black Creek in
 the County of Northampton Containing Two hundred and six Acres
 fifty one Perches and the Allowance of six per Cent $\frac{3}{4}$ ~

Daniel Brodhead Esquire }
 Survey: General. }

Geo: Palmer

IN TESTIMONY that the above is a copy of the original remaining on file in
 the Department of Internal Affairs of Pennsylvania, made
 conformably to an Act of Assembly approved the 16th day of
 February, 1833, I have hereunto set my Hand and caused
 the Seal of said Department to be affixed at Harrisburg,
 this twelfth day of April 1906

Joseph N. ...
 Secretary of Internal Affairs.